



The Papua New Guinea Election Results Database

By Terence Wood
16 March 2017

We are launching the [Papua New Guinea Election Results Database](#) in Port Moresby today. The database contains all available election results for all general elections held in Papua New Guinea since 1972. The database is our attempt to preserve Papua New Guinea's electoral record and to share it with researchers, as well as people from Papua New Guinea who want to know more about the electoral history of their constituency, region, or country.

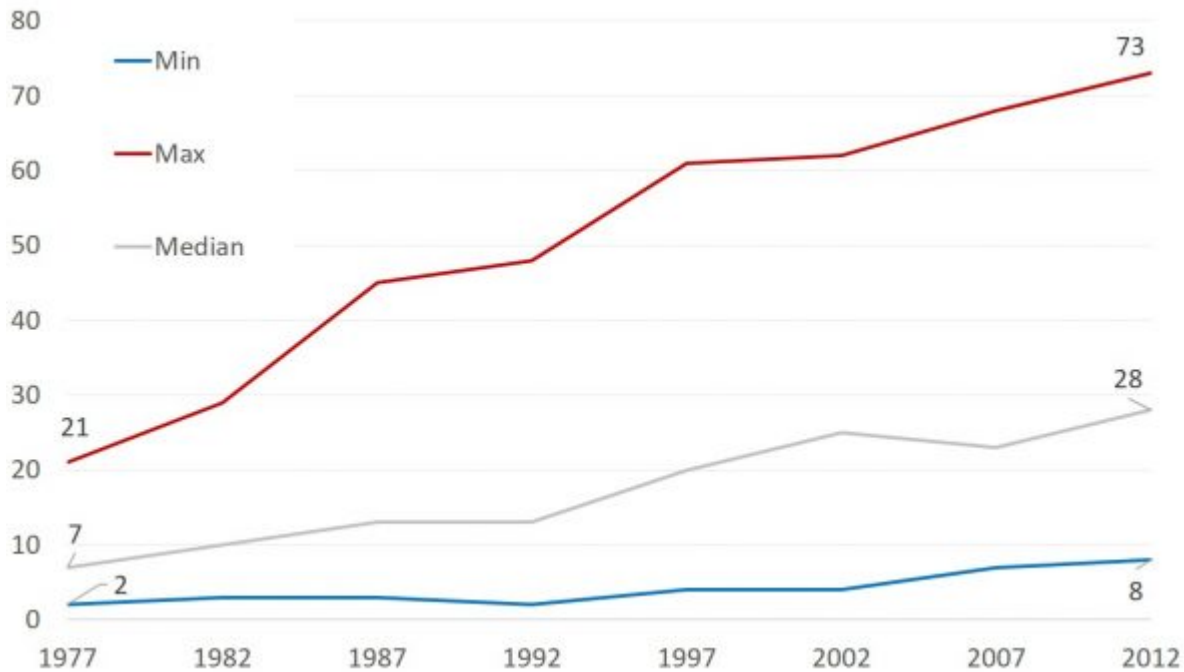
If you are interested in a result from a particular constituency in a particular year you can find it using the database's [Data Explorer](#). If you want booklets of results you can download them from the [Datasets](#) page. And if you want to conduct your own analysis you download results spreadsheets from the same page. There are also other features including an [electorate map](#) and a detailed report on [electoral trends](#).

To launch the PNG Election Results Database online we wanted to provide you with some basics. Here are five key points you should know about election results in Papua New Guinea.

Point 1: Candidate numbers have gone up

The chart below covers every general election since 1977. For each election it shows the number of candidates in the electorate with the most candidates, the number of candidates in the median electorate, and the number of candidates in the electorate with the least candidates. All of the lines are trending upwards. Candidate numbers are on the rise, on average, in PNG. Indeed, in the busiest electorates candidate numbers are astounding. Seventy-three candidates stood in Chimbu Provincial constituency in 2012 and there were 13 constituencies in 2012 where more than 50 candidates stood.

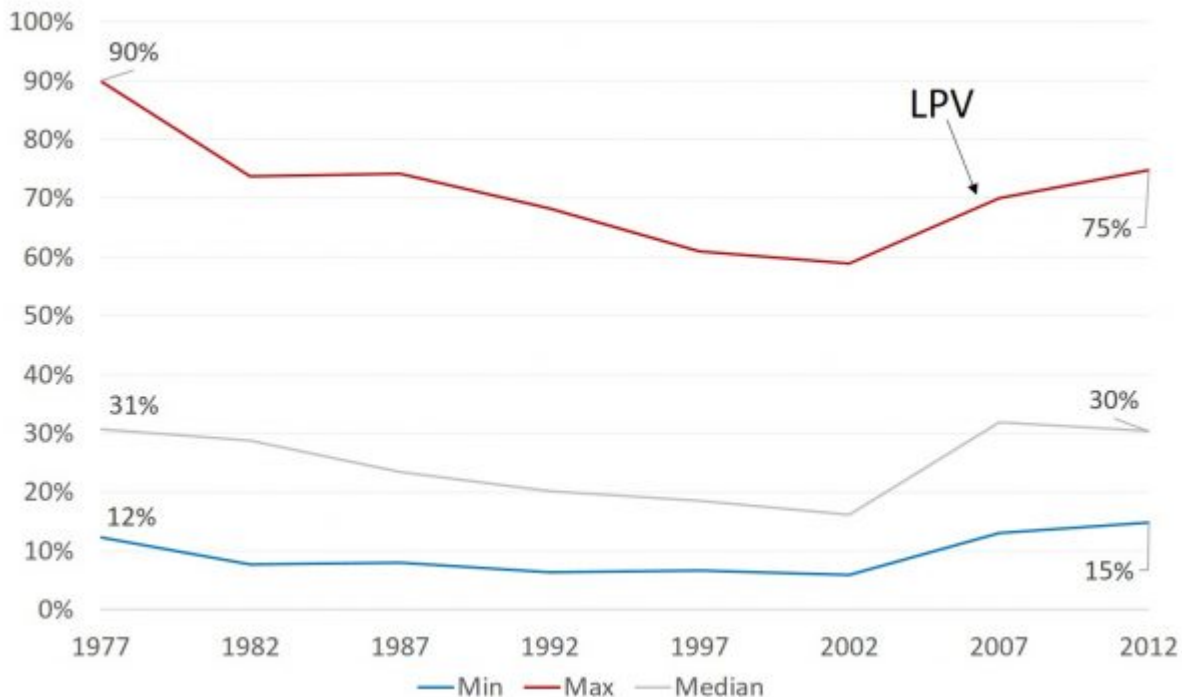
Trends in candidate numbers



Point 2: Winning candidate vote shares have come down - to a point

The next chart shows trends in maximum, median and minimum winning candidate vote shares over time. Initially at least, winner vote shares came down (one candidate won his electorate with 6 per cent of the vote in 2002). The decline in winning candidate vote shares was arrested in 2007 with the introduction of Limited Preferential Voting. However, it is hard to look at the chart and argue that this new voting system has completely transformed election results. In 2012 one candidate was able to win with 15 per cent of the vote, even after preference allocations. And about half of the winning candidates in 2012 won with 30 per cent or less of the votes cast, even taking preferences into account.

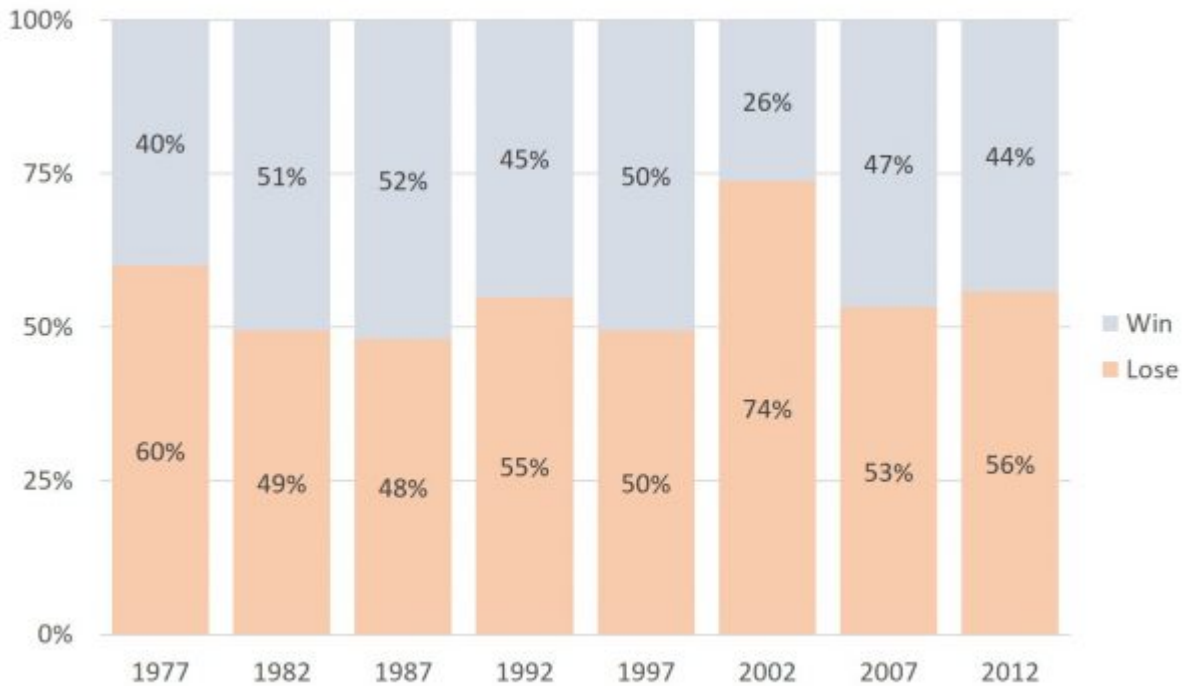
Trends in winning candidate vote shares



Point 3: There are no clear trends in incumbent turnover rates

With more candidates contesting one might expect sitting MPs to be having an increasingly difficult time holding onto their seats. This hasn't been the case. Incumbent MPs don't have it easy. In most elections about half of them have lost. But while, as the chart below shows, turnover rates have bounced around, there's no clear trend towards greater turnover. Of course, 50 per cent is still high. It suggests discontented voters. It also means that at any point in time half the members in parliament are new to politics. In the 2012 parliament, only about 20 per cent of MPs had two or more previous terms' experience.

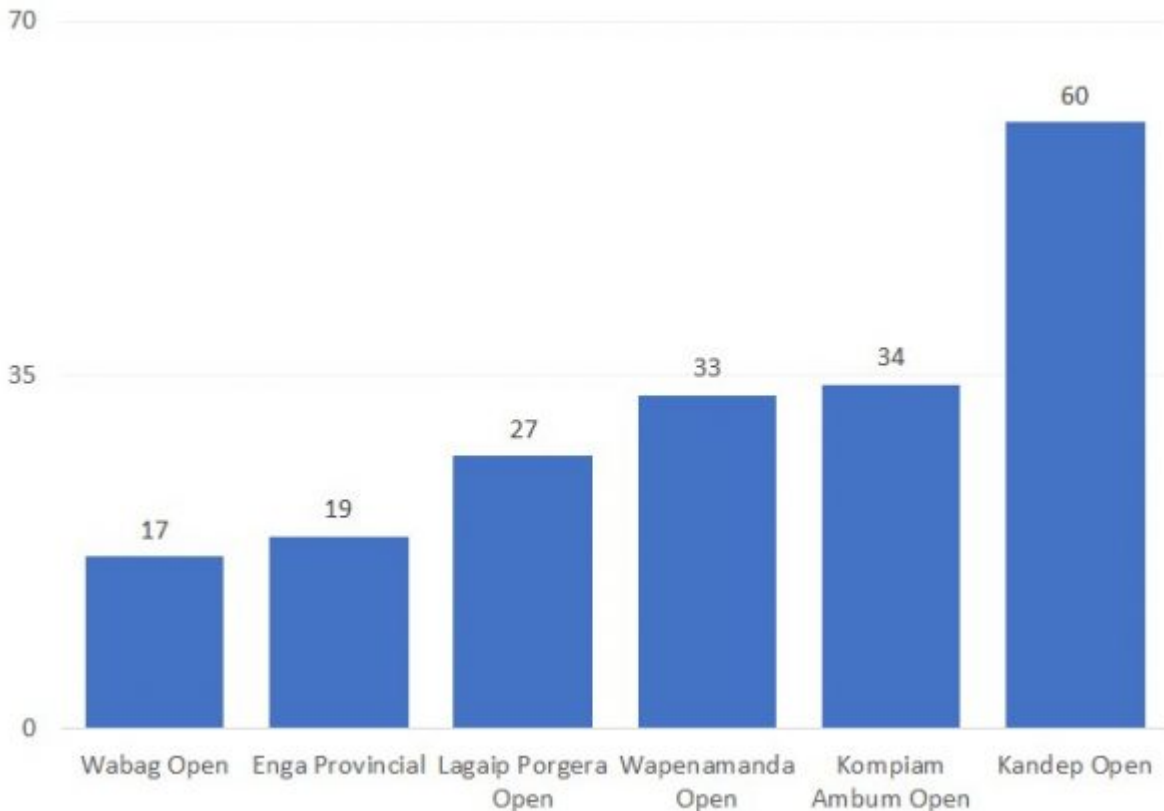
Percentage of incumbents who contested and won or lost



Point 4: There is a lot of variation

Key electoral features differ a lot between different parts of Papua New Guinea. Some of these differences are regional—on average incumbent turnover rates are lower, candidate numbers are lower, and winners win with higher vote shares in the Islands region. However, even within regions there can be a lot of variation. Indeed, there can be a lot of variation within the same province as can be seen in the next chart, which shows the number of candidates standing in the different electorates in Enga Province in 2012. These are neighbouring electorates, but in terms of candidate numbers at least, in 2012 they had very different elections.

Candidate numbers in Enga Province constituencies in the 2012 election



Point 5: The playing field is unfairly tilted against women candidates

Most of the time access to money is crucial in electoral campaigns in PNG. Most of the time having influential community leaders supporting you is important in electoral campaigns in PNG. Often voters, other than close relatives, will only vote for a candidate if they think they are likely to win. Women candidates usually suffer in all of these areas in PNG. Women usually have less money than men. It is harder for women to gain the support from community leaders who are usually men. And because PNG does not have a long history of successful women candidates, it is probably the case that voters often discount the chances of existing candidates and don't vote for them. These challenges are compounded in instances by issues such as gendered norms of how women are expected to behave. Taken together all of this makes it very hard for women candidates to win. The results of this can be seen in the figure below. Papua New Guinea does not lack for strong, intelligent aspiring women politicians, and hopefully they will be increasingly successful in winning elections. But for now they aren't contesting on an equal playing field.

Number of successful women candidates in PNG, by election



These are five key facts for you. There is much more to be discovered if you want to work with the data in [the database](#).

Terence Wood is a Research Fellow at the Development Policy Centre. Terence's research interests include aid policy, the politics of aid, and governance in developing countries.

About the author/s

Terence Wood

Terence Wood is a Fellow at the Development Policy Centre. His research focuses on political governance in Western Melanesia, and Australian and New Zealand aid.

Link: <https://devpolicy.org/png-election-results-database-20170316/>

Date downloaded: 19 April 2024



Australian
National
University

The Devpolicy Blog is based at the Development Policy Centre, Crawford School of Public Policy, College of Asia and the Pacific, Australian National University.